

HCU Manual

The HCU Manual is the basic version of a full range of control possibilities for Vexve hydraulic actuators. It is the right choice where simplicity is key and secure operation is needed at all times.

Technical characteristics

Control cabinet for 4 valves

- Dimensions: 800 x 600 x 300 mm (W x H x D)
- Protection class: IP65

Hand pump

Double acting hand pump with pilot check valves

- Fluid viscosity: 10-500 mm²/s
- Filtration: ISO code 16/13; SAE class 4 or better
- Fluid temperature: -20°C +80°C
- Ambient temperature: -20°C +50°C
- Max. pressure: 380 bar
- Pressure limiter: 200 bar (adjustable)

Oil tank

- Reservoir capacity: 5 lt.

Control valve block

- Control valves: 4-6 pcs.
- Max. pressure: 350 bar
- Positions of lever: 3 (Valve open – Neutral – Valve shut)

One valve is possible to maneuver at a time.

Pressure gauge

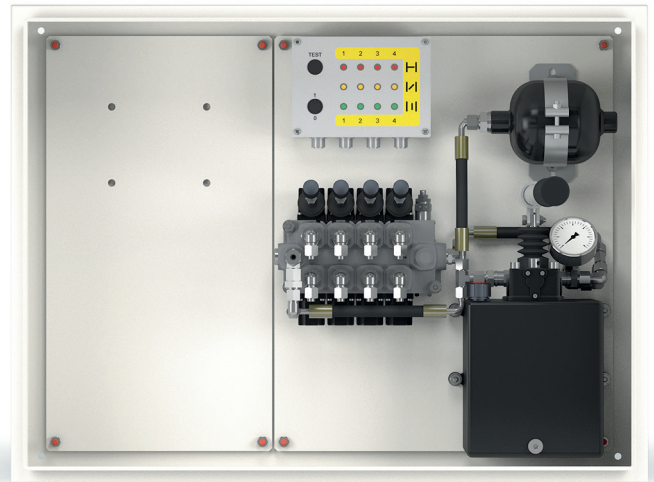
- Range: 0...315 bar

Indicator lamp panel

- Indicates open, middle and shut positions of valves
- Low voltage powered with battery
- Connected to position transmitter on the actuator

Connection for portable pump unit

- Quick couplings with flat face casing
- Pump unit (sold separately) incl. transportation box, hydraulic hoses and electric cable



Model	Product no.
Manual	810000